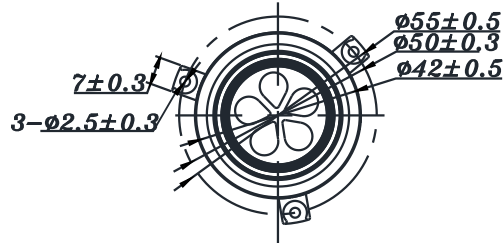
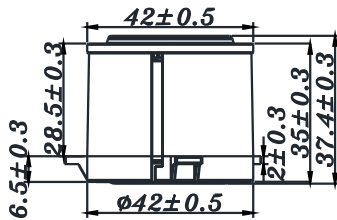


# MODULE

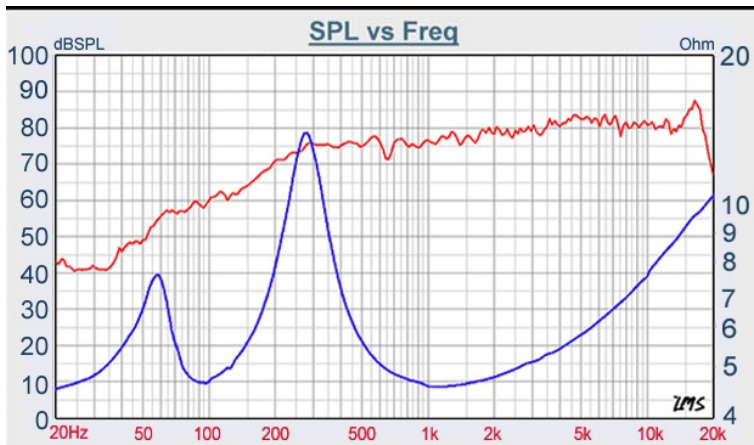
# T1-2025SC



- COMPREHENSIVE SOLUTION FOR AUDIO DESIGN.
- COMBINE DRIVER, PASSIVE RADIATOR AND BOX AS ONE UNIT, PATENTED.
- SLIM AND TINY, LOW BASS FO = 95 Hz.
- MODULE COULD BE RESHAPED TO FIT CUSTOMER'S APPLICATION.
- GOOD FOR PORTABLE, SOUNDBAR, MULTIMEDIA... APPLICATION.

## SYSTEM SPECIFICATION

SYSTEM	Passive radiator design
ACTIVE DRIVER	40mm inverted shape driver
DIAPHRAGM	Alum.composite with elastomer
HOUSING	PP composite material
FINISH	Black
DIMENSIONS	Ø42 x 37mm
VOICE COIL DIAMETER	25.4 mm
IMPEDANCE	4ohm
POWER LOADING	2 W(RMS)
MUSIC POWER	4 W
RESPONSE RANGE	95Hz - 20KHz
SENSITIVITY 1W /1m	78 dB
FO	95 Hz
POWER RECOMMENDED	8 W (RMS)
DESIGN SUGGESTION	High pass filter with 80 Hz, -12dB/oct



VOICE:886.2.26570282 FAX:886.2.26580166  
E-MAIL :info@tb-speaker.com